



High concentrations of lead (Pb) in blood and milk of free-ranging brown bears (*Ursus arctos*) in Scandinavia

Boris Fuchs^{a,*}, Alexandra Thiel^a, Andreas Zedrosser^{b,c}, Ludovick Brown^d, Helle B. Hydeskov^e, Iliia Rodushkin^{f,g}, Alina L. Evans^a, Amanda H. Boesen^a, Anne Randi Græsli^a, Jonas Kindberg^{h,i}, Jon M. Arnemo^{a,i}

^a Department of Forestry and Wildlife Management, Inland Norway University of Applied Sciences, Campus Evenstad, 2418, Elverum, Norway

^b Department of Natural Science and Environmental Health, University of South-Eastern Norway, 3800, Bø in Telemark, Norway

^c Institute for Wildlife Biology and Game Management, University of Natural Resources and Life Sciences, 1180, Vienna, Austria

^d Département de biologie, Université de Sherbrooke, Sherbrooke, J1K 2R1, Québec, Canada

^e School of Animal, Rural and Environmental Sciences, Nottingham Trent University, Southwell, NG25 0QF, United Kingdom

^f Division of Geosciences, Luleå University of Technology, 97187, Luleå, Sweden

^g ALS Scandinavia AB, 97187, Luleå, Sweden

^h Norwegian Institute for Nature Research (NINA), 7485, Trondheim, Norway

ⁱ Department of Wildlife, Fish and Environmental Studies, Faculty of Forest Sciences, Swedish University of Agricultural Sciences, 901 83, Umeå, Sweden

ARTICLE INFO

Keywords:

Lead
Blood
Milk
Ursus arctos
Carnivora

ABSTRACT

Exposure to lead (Pb) is a global health problem for both humans and wildlife. Despite a dramatic decline in human Pb exposure following restrictions of leaded gasoline and industry and thereby an overall reduction of Pb entering the environment, Pb exposure continues to be a problem for wildlife species. Literature on scavenging terrestrial mammals, including interactions between Pb exposure and life history, is however limited.

We quantified Pb concentration in 153 blood samples from 110 free-ranging Scandinavian brown bears (*Ursus arctos*), 1–25 years old, using inductively coupled plasma sector field mass spectrometry. We used generalized linear models to test effects of age, body mass, reproduction status and spatial distribution on the blood Pb concentrations of 56 female bears. We sampled 28 females together with 56 dependent cubs and paired their blood Pb concentrations. From 20 lactating females, we measured the Pb concentration in milk.

The mean blood Pb concentration was 96.6 µg/L (range: 38.7–220.5 µg/L). Both the mean and range are well above established threshold concentrations for developmental neurotoxicity (12 µg/L), increased systolic blood pressure (36 µg/L) and prevalence of kidney disease in humans (15 µg/L). Lactating females had higher Pb blood concentrations compared to younger, non-lactating females. Blood Pb concentrations of dependent cubs were correlated with their mother's blood Pb concentration, which in turn was correlated with the Pb concentration in the milk.

Life-long Pb exposure in Scandinavian brown bears may have adverse effects both on individual and population levels. The high blood Pb concentrations found in brown bears contrast the general reduction in environmental Pb contamination over the past decades in Scandinavia and more research is needed to identify the sources and pathways of Pb exposure in the brown bears.

1. Introduction

Lead (Pb) is a highly toxic element without any known biological functions, that negatively affects multiple physiological systems in vertebrates (Bellinger et al., 2013). In a risk assessment, the European Food Safety Authority (EFSA) established benchmark dose levels of

blood Pb concentrations for developmental neurotoxicity in children (12 µg/L) as well as for increased systolic blood pressure (36 µg/L) and prevalence of kidney disease (15 µg/L) in adults. The EFSA further states that there is “no evidence for a threshold of lead-induced effects” and defines tolerable intake levels as not appropriate (EFSA, 2013).

Pb exposure in terrestrial mammals results from ingestion or

* Corresponding author.

E-mail address: boris.fuchs@inn.no (B. Fuchs).

<https://doi.org/10.1016/j.envpol.2021.117595>

Received 15 January 2021; Received in revised form 6 June 2021; Accepted 12 June 2021

Available online 14 June 2021

0269-7491/© 2021 The Authors. Published by Elsevier Ltd. This is an open access article under the CC BY license (<http://creativecommons.org/licenses/by/4.0/>).

inhalation. In humans ingested or inhaled Pb initially increases blood Pb concentration with a relatively short half-life of approximately 35 days (Rabinowitz et al., 1976). The organism treats Pb as a substitute for calcium and transfers it to soft tissues and bones (Rabinowitz et al., 1976). In mammals, over 90% of the total body Pb is stored in bones and teeth with a half-life of 10–30 years (Andreani et al., 2019; Rabinowitz et al., 1976). During periods of nutritional stress, such as pregnancy and lactation, Pb stored in bones and soft tissue can become an endogenous source resulting in increased blood Pb concentrations (Silbergeld, 1991). Increased calcium demands during skeletal development of the fetus as well as during lactation lead to increased calcium turnover during pregnancy and lactation in the mother. As a result, Pb is released from bones into the blood and into the milk (Ettlinger et al., 2014), which may have detrimental effects on both the mother and her offspring.

In Europe, Pb has been mined, refined and used for more than 2000 years, resulting in widespread airborne pollution from smelting processes and, since the mid-20th century, from Pb as gasoline additive (Settle and Patterson, 1980). In northern European lake sediments, the current environmental Pb concentrations are up to 1000 times higher than the natural background concentrations (Renberg et al., 2001; Settle and Patterson, 1980). Top soils are contaminated with Pb globally, and the Pb uptake in plants growing in these soils pose a risk for consumers (Khalid et al., 2017). Global environmental and health concerns have led to a gradual phasing out of leaded gasoline since the 1970s, which accelerated in the mid-1980s, when European Union member states started to reduce the allowed Pb limits in gasoline (von Storch et al., 2003). Consequently, atmospheric deposition of Pb decreased, especially in northern Europe (Lind et al., 2006; von Storch et al., 2003). For example, Danielsson and Karlsson (2015) reported that the mean Pb concentration in mosses had decreased by 96% in Sweden from 1975 to 2015. Blood Pb concentrations of children in southern Sweden decreased from 60 µg/L in 1978 to 11 µg/L in 2007 (Skerfving et al., 2015; Strömberg et al., 2008) and to 8.5 µg/L in 2019 (data available at Karolinska Institutet, 2020). Liver Pb concentration of bank voles (*Myodes glareolus*) in central Sweden measured in 2017 had decreased by two thirds compared to 2001 (Ecke et al., 2020). This general decrease in exposure suggests a direct link between aerial Pb pollution and Pb exposure in humans and the environment.

In high-income countries, most sources of Pb emission are strictly regulated today. An exemption is Pb used in hunting ammunition, which presents a significant source of exposure for both humans and wildlife (Arnemo et al., 2016; Bellinger et al., 2013). For example, Pb from hunting ammunition is an important source of morbidity and mortality in avian scavengers, such as golden eagles (*Aquila chrysaetos*) (Ecke et al., 2017) and white-tailed eagles (*Haliaeetus albicilla*) (Helander et al., 2009). Increased Pb concentrations in birds also result in behavioral alterations, lower reproductive success, and physiological changes (Berglund et al., 2010; Ecke et al., 2017; Finkelstein et al., 2012; Kelly and Kelly, 2005). Generally, the extent of Pb exposure depends on a species' feeding ecology and can vary within a population, depending on individual spatio-temporal movement patterns and resource specialization (Arrondo et al., 2020; Brown et al., 2019; Nadjafzadeh et al., 2013). Periods of nutritional stress, such as pregnancy or incubation, may mobilize Pb from endogenous sources and increase the risk for clinical effects of Pb concentration in wildlife (Lam et al., 2020).

Scientific evaluations of Pb exposure in wild-living terrestrial mammals commonly use a screening approach, typically sampling of soft tissues, with human food safety or biomonitoring as the main motivation (eg. Chiari et al., 2015; Morales et al., 2011). Studies including other variables of the investigated populations, such as sex and age, vary in results. For example, female European roe deer (*Capreolus capreolus*) in Spain had higher Pb concentrations than males in kidney and muscle tissue, but the same concentrations in liver tissue (García et al., 2011). Higher Pb concentrations with increasing age were found in male roe deer liver and muscle tissue in Spain (García et al., 2011), while no age effect was found in bone or teeth in Poland. In red

deer (*Cervus elaphus*) bone Pb concentrations increase with age in Croatia (Lazarus et al., 2008), however, no such increase was found in Spain (Rodríguez-Estival et al., 2013). Lazarus et al. (2018a) found no sex differences in Pb concentrations in the femoral bones or in liver and kidney tissues (Lazarus et al., 2018b) of brown bears (*Ursus arctos*) in Croatia, but animals ≥ 4 years had higher Pb concentrations compared to younger individuals. Brown bear cubs-of-the-year (<1 year old) had higher Pb concentrations in soft tissue compared to yearlings, which indicates a transfer of Pb during pregnancy and lactation.

We used a brown bear population in Scandinavia as a sentinel for environmental Pb exposure, and evaluated blood Pb concentrations in relation to life-history traits (age, body mass). Studies on free-ranging brown bears in the USA, south-eastern Europe, and Scandinavia have reported mean blood Pb concentrations of 55 µg/L (Rogers et al., 2012), 61 µg/L (Lazarus et al., 2020), and 88 µg/L (Boesen et al., 2019), respectively. These high Pb concentrations suggest that brown bears may act as a good sentinel species. Brown bears are omnivorous and their diet typically consists of vegetation and berries, but they also kill or scavenge on ungulates and feed on insects, (Bojarska and Selva, 2012; Dahle et al., 1998; Rauset et al., 2012; Stenset et al., 2016; Swenson et al., 2007b), and, thus, represent the cumulative burden of different potential Pb sources. Scandinavian brown bears hibernate up to 6 months between October and April (Evans et al., 2016). Females mate in June and delay implantation until the onset of hibernation in fall, and give birth in the winter (Friebe et al., 2014; Tsubota et al., 1987). Females exhibit active-state body temperatures during gestation, give birth after 56 days and then decrease their metabolic rate back to hibernation levels (Friebe et al., 2014). In Sweden, offspring remain with their mothers for 1–2 years (Van de Walle et al., 2018).

The aims of this study were to screen blood Pb concentrations in the brown bear population in south-central Scandinavia and to evaluate if Pb concentrations are correlated with life-history traits and lactation. We predicted that blood Pb concentrations in female brown bears increase with age, body mass, and during lactation. We also tested for spatial correlations, because exposure to Pb may vary in space and spatial clustering may affect life history traits differently. We further hypothesized that brown bear offspring are exposed to Pb from lactation, and predicted that variations in milk Pb concentration are related to a female's blood Pb concentration, and that the offspring's blood Pb concentration is positively correlated with the mother's blood Pb concentration.

2. Methods

2.1. Study area

This study is part of a long-term individual-based research project on brown bears in south-central Sweden and south-eastern Norway (~61°N, 15°E) (Scandinavian Brown Bear Research Project, 2020). The size of the study area is approximately 13,000 km², predominantly covered with intensively managed coniferous forests in stands of different ages, ranging from recent clear cuts to 90-100-year-old stands (Martin et al., 2010; Swenson et al., 1999). The rolling landscape is interspersed with lakes and bogs, and with agricultural fields towards the east. The altitude gradually increases from ≈150 m above sea level in the east to 850 m above sea level in the west, which is also the approximate tree line. Human settlements are concentrated in the north and south, with only few high-traffic roads (0.14 km/km²). However, isolated houses (mainly cabins) and both paved and gravel roads with low traffic volume are distributed throughout the study area (0.3 cabins/km² and 0.7 km low-traffic roads/km²) (Martin et al., 2010).

2.2. Capture and sampling

All brown bear captures and sampling were carried out according to an established protocol (Arnemo and Evans, 2017) approved by the

Swedish Ethical Committee on Animal Research (Uppsala, Sweden; Dnr 5.8.18–03376/2020), the Swedish Environmental Protection Agency (NV-00741-18), the Swedish Board of Agriculture (#31–11102/12), the Norwegian Food Safety Authority (FOTS ID, 19368) and the Norwegian Environment Agency (2018/3346). All bears were darted from a helicopter in the spring (April–May; 2010–2019), sex-determined and weighed using a digital spring scale. Because the captures mainly focused on known females and their dependent yearling offspring, the age of most captured individuals was known. Bears captured the first time as adults were aged by counting the cementum layers of a vestigial first premolar (Mattson, 1993). All captured bears were tattooed and microchipped for individual recognition.

2.3. Blood and milk sampling

Blood was collected from the jugular vein in 4 mL evacuated K3EDTA tubes (EDTA, $n = 118$) (Vacuette, Greiner Bio-One International GmbH, Kremsmünster, Austria) and in 6 mL evacuated heparin trace element tubes (TE, $n = 54$) (Vacuette). Mammary glands of adult females were palpated to visually confirm lactation. We administered 10 IU oxytocin (Vetocin 10 IU/mL, Bela-Pharm GmbH & Co. Kg, Vechtra, Germany) to lactating females and collected approximately 1 mL milk in a 10 mL non-collared screw cap tube (Sarstedt, Nümbrecht, Germany). Tubes with samples were frozen the same day and kept at -20°C during storage and shipment to the laboratory (ALS Scandinavia AB, Luleå, Sweden).

2.4. Pb analysis

At the laboratory, blood and milk samples were prepared for analysis by closed vessel MicroWave-assisted acid digestion. Pb concentration in digests was measured by high-resolution inductively-coupled plasma sector field mass spectrometry (ICP-SFMS, ELEMENT XR, Thermo-Scientific, Bremen, Germany) using a combination of internal standardization and external calibration. Quality assurance and quality control (QA/QC) included a set of preparation blanks and matrix-matched control specimens (Seronom Trace Elements Whole Blood Levels 1 and 2 from SERO AS, Norway) prepared and analyzed with each analytical batch of blood samples. Contribution from preparation blanks was less than $0.2\ \mu\text{g/L}$ and thus negligible for Pb concentrations found in milk and blood samples. Differences between found and target Pb concentrations for the controls were under 6%, the relative standard deviation (RSD) and of the same magnitude as typical instrumental precision (in the range 3%–5% RSD). Further details on analytical methods can be found in Rodushkin et al. (2000).

2.5. Sampled brown bears

We analyzed a total of 172 blood samples for Pb concentrations. The samples were collected on 153 sample events (2010: 13, 2013: 9, 2017: 31, 2018: 46, 2019: 37, and 2020: 17). Nineteen samples were analyzed in pairs (collected at the same sample event). Sampled animals were comprised of bears sampled during family group captures, i.e. mothers ($N = 28$) captured with 1–3 dependent offspring ($N = 56$), family group capture attempts with either only the mother ($N = 16$) or only offspring ($N = 11$) captured, and captures of single bears ($N = 42$). A total of 67 dependent offspring were sampled, 55 yearlings and 12 two-year-olds. Mean age for both independent females and males was 8.7 years (range: 3–25 years). We collected milk samples from 20 females; nine of those had cubs-of-the-year, eight had yearlings and three two-year-old offspring. Individual bears were sampled up to four times during the study period, a total of 110 individual bears are included in the study.

2.6. Statistical analysis

To investigate possible contamination by the blood sampling tubes, we tested Pb concentrations in 19 brown bears using both TE and EDTA

tubes. We tested whether the differences between Pb concentrations of the TE compared to the EDTA values were lower or greater than 0 with a paired Wilcoxon rank test. Pb concentrations of blood collected in EDTA tubes were significantly lower than from samples collected in TE tubes ($W = 151$; $P = 0.01$), with a median difference of $2.51\ \mu\text{g/L}$ ($SD = 2.46$; range: 0.03 – $9.28\ \mu\text{g/L}$). We then fitted a linear regression model with the TE value as the response and the EDTA value as the predictor value and forced the intercept through zero. We used the regression coefficient $\beta = 1.013$ to correct all EDTA based Pb concentrations in the data set; after this correction, the newly calculated EDTA values were not significantly different from TE values ($W = 113$; $P = 0.49$) and were used for further analysis. We evaluated the correlation between milk Pb concentration and the blood Pb concentration with Spearman's rho. We further tested if milk Pb concentration was related to the lactation period in years (i.e., the offspring's age) with a Kruskal-Wallis test. We used R version 3.6.3 for all data handling and analyses (R Core Team, 2019).

2.7. Blood Pb variation in relation to life history and spatial correlation in female bears

To investigate spatial correlation of Pb values in relation to life history traits, we fitted a variogram model with age and reproductive status as explanatory variables, using Pb concentration as the identifier and 200 km as the cutoff value (i.e., the distance from the eastern to the western edge of the study area). A second variogram was fitted and the result split by the four cardinal directions. Variograms were fitted using the variogram function of the *gstat* library (Pebesma, 2018).

To test if spatially defined groups of sampled bears within the study area differed in their Pb concentrations, we performed a hierarchical cluster analysis of the Euclidian distance between capture locations using the *hclust* function and the complete method to find similar clusters from the *stats* library in R. We plotted the cluster dendrogram and visually determined a reasonable cutoff value (Zuur et al., 2009). We added the cluster ID to each observation in the data set.

We used a generalized linear model (GLM) to investigate whether blood Pb concentration of independent (i.e. weaned from their mother) sub adult and adult females is affected by life history traits, i.e. age (in years), reproductive status (lactating vs non-lactating), and the spatial cluster ID. Because age and body mass are highly correlated in brown bears (Bartreau et al., 2011; Swenson et al., 2007a; Zedrosser et al., 2006), we only used age as the explanatory variable. We fitted the GLM with a gamma distribution and an identity link function to avoid estimation of negative Pb concentrations. Despite repeated measurements, we decided not to include the bear ID as a random variable due to non-convergence issues caused by too few replicates per bear ID (one to three measurements per bear). The cluster ID variable was retained in all candidate models, except the Null model. Then we fitted a set of candidate models comparing all possible variable combinations as well as a Null model and carried out model selection based on the Akaike Information Criterion corrected for small sample size (AICc). We averaged models within a cut off value of $\Delta\text{AICc} \leq 2$ with the *AICcmodavg* package (Mazerolle, 2019). The mean gamma dispersion parameter from the two models was used for model averaging. The age was known for only nine of the 15 solitary males and we therefore decided to exclude males from this analysis.

2.8. Blood Pb correlation between mothers and offspring

We used generalized linear mixed models (GLMM) with a Gaussian distribution and maximum likelihood estimation (ML) to evaluate the blood Pb concentration of dependent offspring in relation to the blood Pb concentration of their mothers. We used the offspring's Pb concentration as the response variable, and the mother's Pb concentration as well as categories for sex and age of the offspring as the explanatory variables. Because several offspring were captured as part of a family

group, we added the ID of the mother as a random intercept. We used a model with the blood Pb concentration of the mother as a fixed variable as the base model and compared it to models containing different combinations of the variables age and sex. We performed model selection based on the lowest AICc value and averaged models within a $\Delta\text{AICc} \leq 2$ (Mazerolle, 2019).

3. Results

3.1. Sampling

All 153 blood samples contained measurable concentrations of Pb. The overall mean blood Pb concentration was $96.6 \mu\text{g/L} \pm 35.6 \mu\text{g/L}$ (SD) (Table 1), with a range from $38.7 \mu\text{g/L}$ measured in a two-year-old male to $220.5 \mu\text{g/L}$ in an adult female.

We excluded two milk samples due to concerns by the laboratory over the validity of the values because of very low collected volume and associated contamination risk. The Pb concentration of the remaining milk samples ($N = 18$) ranged from $21.4 \mu\text{g/L}$ to $103.6 \mu\text{g/L}$, with a mean of $42.9 \mu\text{g/L} \pm 21.1 \mu\text{g/L}$. Females with higher blood Pb concentration also had significantly higher Pb concentration in their milk ($N = 18$, $\rho = 0.60$, $p = 0.011$). The milk Pb concentration did not differ between lactating females accompanied by cubs-of-the-year, yearlings, or two-year-old offspring ($\chi^2 = 3.2$, $df = 2$, $p = 0.20$).

3.2. Blood Pb variation in relation to life history of female bears

Age and reproductive status were available for 56 blood samples from 34 independent sub adult and adult females (1–3 samples/individual). Thirty-one bears (age: 5–25 years) were lactating, and 25 individuals (age: 2–10 years) were non-lactating. The plotted output of the variograms displayed an approximately horizontal line over the entire distance tested and a lack of spatial correlation (Fig. S1). Splitting the variogram into the four cardinal directions revealed no clear spatial patterns in any direction (Fig. S2).

Based on the dendrogram of the cluster analysis, we chose a cut off value of 60 km resulting in four different clusters named after their geographic location (from west to east: Fulufjell, Älvdalen, Noppikosiki (Noppi) West and Noppi East; Fig. 1 and Fig. 2). Two models fell within $\Delta\text{AICc} \leq 2$; the model with the lowest AICc contained reproductive status, age and the cluster ID as fixed terms, and the second-best model contained the variables reproductive status and cluster ID as fixed terms (Table 2). We used the model-averaged estimates of these two models for further interpretation (Table 3). Compared to non-lactating females, the top model predicted a 1.3 to 1.6 times higher blood Pb concentration in a lactating 10-year-old female bear, depending on cluster (Fig. 3). Blood Pb concentrations were highest in the cluster west from the study area center and decreased towards the eastern cluster. Pb blood concentrations were also lower in older individuals, however, with overlapping confidence intervals (CI's) and small effect size; e.g. the predicted Pb blood concentration of a 15-year-old lactating female in the

Table 1

Mean blood lead (Pb) concentrations ($\mu\text{g/L}$) of brown bears (*Ursus arctos*) in Scandinavia, collected in 2010, 2013, and 2017–2020. Concentrations are shown for all bears in the data set (All), solitary males and females, females accompanied by dependent offspring, and dependent offspring. N = sample size, mean = arithmetic mean, SD = standard deviation of the mean, range = minimum and maximum values observed in the data.

Group	N	Mean	SD	Range
All	153	96.6	35.6	38.7–220.5
Solitary	42	87.2	32.9	40.9–175.2
- males	15	104.2	42.4	41.9–175.2
- females	27	77.7	21.9	40.9–132.3
Females with dependent offspring	44	112.0	37.5	53.1–220.5
All offspring	67	92.3	33.0	38.7–166.5

eastern-most cluster was $83.7 \mu\text{g/L}$ (95% CI: 60.3 – $107.0 \mu\text{g/L}$) compared to $92.0 \mu\text{g/L}$ (95% CI: 76.5 – $107.6 \mu\text{g/L}$) for 10-year-olds (Table 3).

3.3. Blood Pb correlation between mothers and offspring

Two GLMMs explaining blood Pb concentrations in offspring were within $\Delta\text{AICc} \leq 2$: the most supported model contained only the maternal blood Pb concentration as explanatory variable, the second model contained the offspring's age in addition. Further interpretation is based on the averaged model output of these two models. Blood Pb concentrations of offspring increased significantly ($0.77 \mu\text{g/L}$; 95% CI: 0.6 – $1.0 \mu\text{g/L}$) with increasing maternal blood Pb concentration (Fig. 4) (Table 4). For example, the model estimated a blood Pb concentration of $70.4 \mu\text{g/L}$ (95% CI = 54.2 – $86.6 \mu\text{g/L}$) for a yearling offspring if the mother has a blood Pb concentration of $82.0 \mu\text{g/L}$ (1st quantile of maternal Pb concentrations). If a mother has a blood Pb concentration of $138 \mu\text{g/L}$ (3rd quantile of maternal Pb concentrations), her yearling offspring has an estimated blood Pb concentration of $113.6 \mu\text{g/L}$ (95% CI = 86.1 – $140.6 \mu\text{g/L}$) (Table 4).

4. Discussion

We found that lactating females had significantly higher blood Pb concentrations compared to non-lactating females (supporting prediction i). We also found support for the hypothesis that offspring are exposed to Pb due to suckling, i.e. maternal Pb blood concentrations are significantly and positively correlated with milk Pb concentration (supporting prediction ii) as well as with the offspring's blood Pb concentrations (supporting prediction iii). The mean blood Pb concentration ($92.3 \mu\text{g/L}$) of dependent offspring with a developing neurosystem exceeded the EFSA thresholds of $12 \mu\text{g/L}$ for developmental neurotoxicity in children by a factor of eight, and all analyzed blood Pb concentrations were above the threshold for increased systolic blood pressure of $36 \mu\text{g/L}$ in humans (EFSA, 2013). The blood Pb concentrations in Scandinavian brown bears (mean $96.6 \mu\text{g/L}$) were also higher than in brown bear populations of the greater Yellowstone area (mean $55 \mu\text{g/L}$) and south-eastern Europe (mean $61 \mu\text{g/L}$) (Lazarus et al., 2020; Rogers et al., 2012). Our findings strongly indicate high Pb exposure in the south-central Scandinavian brown bear population. Most likely, bears are exposed to Pb throughout life, starting during the fetal period and continuing for their entire life-spans at levels, considered a health risk in humans.

Lactation increases calcium turnover, and Pb stored in bones can be reabsorbed to the blood and become an endogenous source for blood Pb (Silbergeld, 1991). In experimental studies on laboratory mice, Keller and Doherty (1980) showed that the milk to plasma ratio is similar for calcium and Pb. In humans, the relationship between maternal blood Pb concentration and milk Pb concentration follows a linear relationship (Ettinger et al., 2014; Gulson et al., 1998). Mice with intravenously injected Pb, transferred approximately 25% of the injected Pb dose to the suckling pups (Keller and Doherty, 1980). This suggests that also lactating brown bears mobilize Pb from their bones, resulting in increased blood Pb concentrations and in transfer to milk and excretion of Pb from their bodies. A confounding factor in our study is that age and lactation are not independent. Almost all females above 10 years of age were lactating at the time of sampling whereas only three out of 23 females younger than 7 years old were lactating. Data exploration suggested an increasing blood Pb concentration with increasing age (Fig. 3). However, once we accounted for lactation, the effect of age disappeared, indicating no correlation between blood Pb concentration and increasing age.

More than one third of the offspring in the study area wean from their mothers during their third year of life (Van de Walle et al., 2018) and we found that females with 2-year-old offspring were still lactating ($N = 3$). Although Pb concentration in milk decreases during the

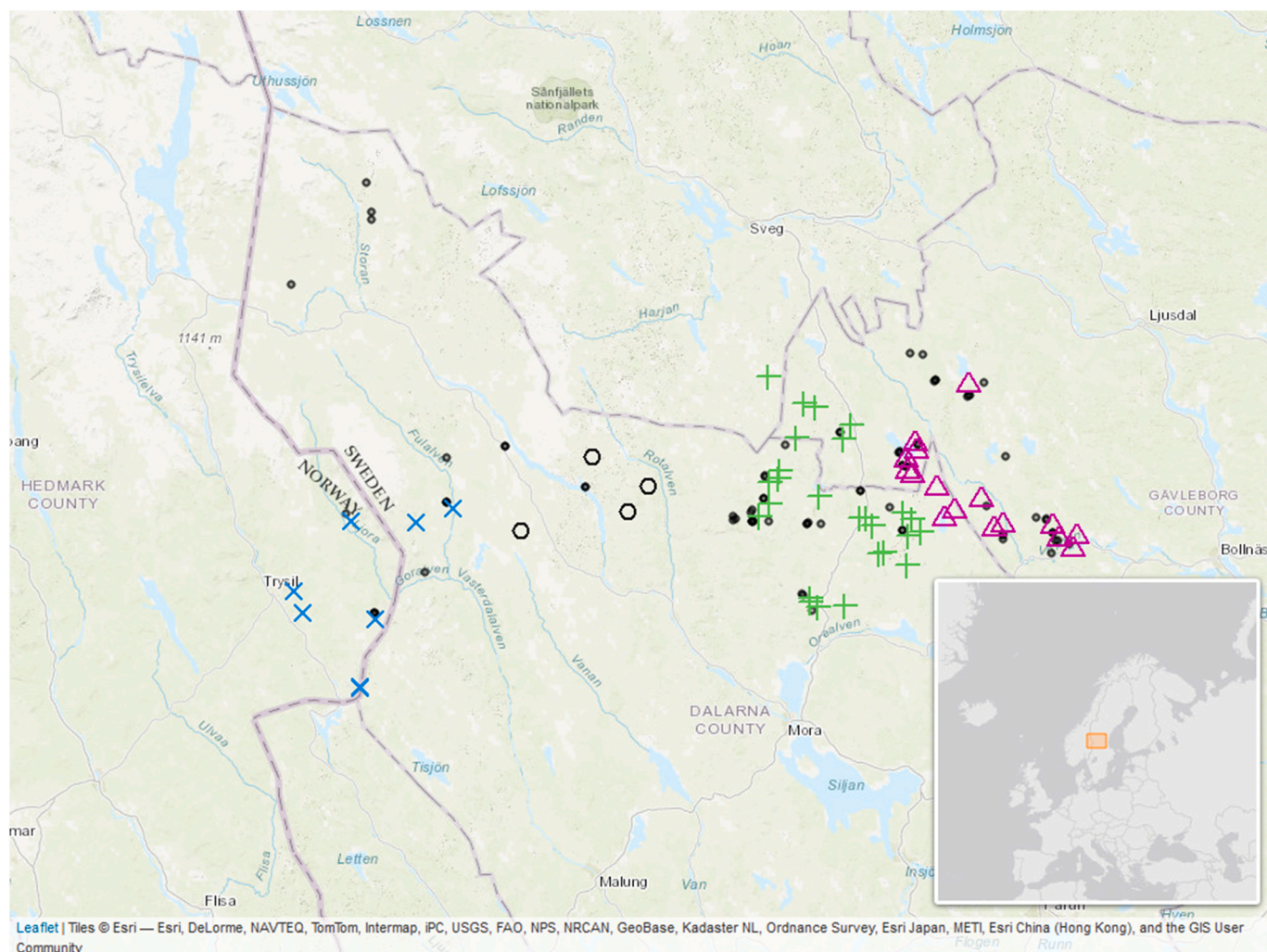


Fig. 2. Sampling locations of Pb concentrations in blood and milk from Scandinavian brown bears (*Ursus arctos*) collected in 2010, 2013, and 2017–2019. Adult females included in the life history model are divided in four spatial clusters; from West to East: Fulufjell (blue X), Älvdalen (open black circles), Noppi West (green crosses) and Noppi East (pink triangles). Sampling locations of independent males, females with missing information about the age and all dependent offspring are displayed as black dots.

Table 2

Model selection for estimating blood lead (Pb) concentration ($\mu\text{g/L}$) in female brown bears (*Ursus arctos*) in Scandinavia, based on the Akaike Information Criterion for small sample size (AICc). Estimated parameters are lactating or non-lactating bears (Status), the Age of the bear in years, and the ID of the spatial Cluster, the number of estimated parameters (K), the AICc, the AICc difference to the top model (ΔAICc) and the weight of evidence (W_i) for each model. Data was collected in 2010, 2013, and 2017–2019.

Model	Parameters	K	AICc	ΔAICc	W_i
Full	Status + Age + Cluster	7	518.63	0	0.71
Status	Status + Cluster	6	520.47	1.84	0.28
Age	Age + Cluster	6	535.86	17.23	0.00
Cluster	Cluster	5	536.25	17.62	0.00
Null	1	2	546.36	27.73	0.00

due to aerial depositions for our entire study area. Further, the increased blood Pb concentration predicted west in the study area for female bears, coincides with increased Pb concentrations in sub soil in the same area (Salminen et al., 2005). It remains unclear if and how, hibernation affects Pb kinetics and blood Pb concentration in bears. During hibernation, there is no ingestion of Pb and excretion of Pb is likely very low, because bears do not eat or drink during hibernation, their urine production is very low and bile excretion entirely absent (Nelson et al.,

Table 3

Generalized linear regression model estimates predicting blood lead (Pb) concentrations ($\mu\text{g/L}$) for female brown bears (*Ursus arctos*) in Scandinavia for the study period 2010, 2013, and 2017–2019. Status Lactating: Lactating female with offspring, Age: Age of the bear in years, Cluster: ID of the four spatial clusters based on spatial cluster analysis (Cluster Fulufjell is used as intercept).

Coefficient	Estimate	Standard Error	95% Confidence intervals
Intercept	100.00	11.89	76.69–123.32
Status Lactating	35.98	10.01	16.35–55.60
Age	-1.68	0.79	-3.23–0.12
Cluster Älvdalen	28.94	20.77	-11.76–69.64
Cluster Noppi West	-16.58	11.20	-38.54–5.37
Cluster Noppi East	-27.17	11.39	-49.50–4.84

1973).

Large game hunting with Pb-based ammunition poses an additional potential source for high blood and milk Pb concentrations of bears. In Sweden, 90% of bullets used to harvest moose are Pb based and these bullets normally fragment into inner organs that are left for scavengers (Stokke et al., 2017). The moose-hunting season in central Sweden starts in early September and lasts until the end of January. While most bears start hibernating in late October (Evans et al., 2016), pregnant females may enter their dens between late September and late October (Friebe

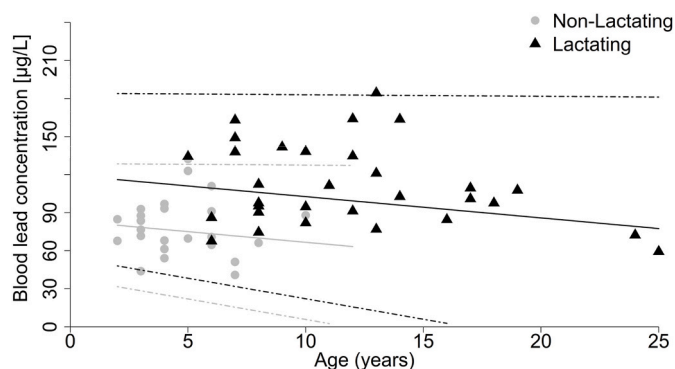


Fig. 3. Blood lead (Pb) concentrations of lactating (black triangle) and non-lactating (grey dot) adult female brown bears (*Ursus arctos*) in Scandinavia in relation to their age. Model predictions for a lactating bear (black solid line) with 95% confidence interval (CI; black dash-dotted lines) and non-lactating bears (grey solid line, 95% CI grey dash-dotted lines) in the Noppi West cluster. Data collected in 2010, 2013, and 2017–2019.

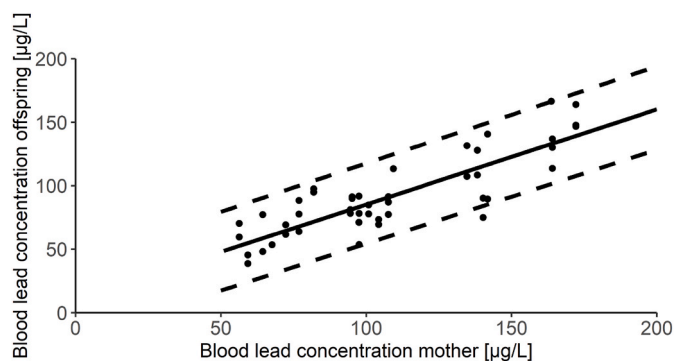


Fig. 4. Blood lead (Pb) concentrations of Scandinavian brown bear (*Ursus arctos*) offspring in relation to the blood lead concentration of their mother (points) and predicted values for female offspring from a linear mixed model (solid line) with 95% confidence intervals (dashed lines). Data collected in 2010, 2013, and 2017–2020.

Table 4

Mixed linear regression model estimates predicting blood lead (Pb) concentrations ($\mu\text{g/L}$) for offspring brown bears (*Ursus arctos*) in Scandinavia for the study period 2010, 2013, and 2017–2020, dependent on the blood Pb concentration of the mother and whether offspring is one or two years old. The mothers ID was used as a random factor.

Coefficient	Estimate	Standard Error	95% confidence interval
Intercept	7.48	11.42	−15.29–30.24
Blood Pb Mother	0.77	0.10	0.57–0.97
Offspring age: 2 years	7.41	6.22	−4.79–19.60

et al., 2014, 2001; Manchi and Swenson, 2005). Of the total moose harvest in our study area, 75% are shot during October and consequently the available moose-based biomass for scavengers is estimated to be 15 fold higher compared to before the hunting season (Länsstyrelserna, 2019; Wikenros et al., 2013). We lack data on the frequency of use of gut piles by brown bears but individuals might have reduced mobility or hibernate through parts of the peak hunting season. During spring in Scandinavia, after hibernation, moose is a major proportion of the bears estimated dietary energy content (Stenset et al., 2016). Winter mortality, traffic kills and, in areas with sympatric wolf (*Canis lupus*) presence, wolf-killed moose compose the available biomass in spring (Ordiz et al., 2020; Wikenros et al., 2013). A potential source of Pb exposure during spring are slaughter remains that are discarded in the forest by hunters

and visited by bears. Common ravens (*Corvus corax*) in Wyoming USA, showed sharp increases in blood Pb concentrations by the start of the moose hunt and slightly elevated concentrations during the snow melt in spring when hunting remains from the fall reappear (Craighead and Bedrosian, 2008). Gut piles from the fall however, are commonly rapidly consumed and only rarely available to bears in the spring (Gomo et al., 2017).

5. Conclusions

Scandinavian brown bears are highly exposed to environmental Pb despite the generally large decrease of the Pb burden on a spatio-temporal scale in Europe. In Scandinavia, sediment core Pb concentrations dated back to pre-human metallurgic activities are very low (Renberg et al., 2001) therefore we assume that the major proportion of Pb exposure in bears is related to human use of Pb. The generally high Pb blood concentrations of bears and the differences in Pb concentrations between lactating and non-lactating females indicate endogenous release of Pb stored in other body parts into the blood. The exogenous sources remain unclear, but berry consumption, ingestion of soil during foraging and Pb from large game hunting with Pb-based ammunition are most likely the major contributing factors. For suckling offspring, Pb in milk is most likely the major source. Based on the Pb blood concentrations observed the early life stages and latent exposure on the population level, we would expect to observe adverse effects at individual or population level. Our findings are in contradiction to the dramatic decrease in Pb exposure in Scandinavia over the past decades in both the environment and humans as a result of successful mitigation of Pb pollution from gasoline additives. We see a strong need to investigate the source of the Pb exposure in the bears and to investigate potential negative health effects in order to further reduce Pb pollution in the environment.

Funding

The Norwegian Environment Agency, the Swedish Environmental Protection Agencies and the Research Council of Norway are primary funders of the Scandinavian Brown Bear Research Project. This work is part of a PhD funded by Inland Norway University of Applied Sciences and the Norwegian Environment Agency [grant number 19047048].

Author contributions

Arnemo: Conceptualization; **Fuchs, Thiel:** Methodology; **Rodushkin:** Resources; **Arnemo, Boesen, Evans, Fuchs, Græsli, Hydeskov, Rodushkin, Thiel:** Investigation; **Fuchs, Thiel:** Formal analysis; **Fuchs:** Writing – Original Draft; **Arnemo, Brown, Evans, Fuchs, Græsli, Hydeskov, Kindberg, Rodushkin, Thiel, Zedrosser:** Writing – Review & Editing; **Arnemo, Zedrosser:** Supervision; **Arnemo, Kindberg:** Project administration; **Arnemo, Kindberg:** Funding acquisition.

Declaration of competing interest

The authors declare the following financial interests/personal relationships which may be considered as potential competing interests: I. Rodushkin is employed by ALS Global AB in Luleå, Sweden.

Acknowledgments

We thank David Ahlqvist, Andrea Friebe and Sven Brunberg for their contribution to the fieldwork. This is scientific publication nr. 316 from the Scandinavian Brown Bear Research Project. Graphical abstract by Juliana D. Spahr, SciVisuals.com.

Appendix A. Supplementary data

Supplementary data to this article can be found online at <https://doi.org/10.1016/j.envpol.2021.117595>.

[org/10.1016/j.envpol.2021.117595](https://doi.org/10.1016/j.envpol.2021.117595).

References

- Andreani, G., Cannavacciuolo, A., Menotta, S., Spallucci, V., Fedrizzi, G., Carpenè, E., Isani, G., 2019. Environmental exposure to non-essential trace elements in two bat species from urbanised *Tadarida teniotis* and open land *Miniopterus schreibersii* areas in Italy. *Environ. Pollut.* 254, 113034. <https://doi.org/10.1016/j.envpol.2019.113034>.
- Antunovic, Z., Bogut, I., Sencic, D., Katic, M., Mijic, P., 2005. Concentrations of selected toxic elements (cadmium, lead, mercury and arsenic) in Ewe milk in dependence on lactation stage. *Czech J. Anim. Sci.* 50, 376. <https://doi.org/10.17221/4179-CJAS>.
- Arnemo, J.M., Andersen, O., Stokke, S., Thomas, V.G., Krone, O., Pain, D.J., Mateo, R., 2016. Health and environmental risks from lead-based ammunition: science versus socio-politics. *EcoHealth* 13, 618–622. <https://doi.org/10.1007/s10393-016-1177-x>.
- Arnemo, J.M., Evans, A.L., 2017. Biomedical protocols for free-ranging brown bears, gray wolves, wolverines and lynx. Inland Norway University of Applied Science, Evenstad, Norway. <https://brage.inn.no/inn-xmlui/handle/11250/2444409>.
- Arondo, E., Navarro, J., Perez-García, J.M., Mateo, R., Camarero, P.R., Martín-Doimeadios, R.C.R., Jiménez-Moreno, M., Cortés-Avizanda, A., Navas, I., García-Fernández, A.J., Sánchez-Zapata, J.A., Donazar, J.A., 2020. Dust and bullets: stable isotopes and GPS tracking disentangle lead sources for a large avian scavenger. *Environ. Pollut.* 266, 115022. <https://doi.org/10.1016/j.envpol.2020.115022>.
- Bartareau, T.M., Cluff, H.D., Larter, N.C., 2011. Body length and mass growth of the brown bear *Ursus arctos* in northern Canada: model selection based on information theory and ontogeny of sexual size dimorphism. *Can. J. Zool.* 89, 1128–1135. <https://doi.org/10.1139/z11-088>.
- Bellinger, D.C., Burger, J., Cade, T.J., Cory-Slechta, D.A., Finkelstein, M., Hu, H., Kosnett, M., Landrigan, P.J., Lanphier, B., Pokras, M.A., Redig, P.T., Rideout, B.A., Silbergeld, E., Wright, R., Smith, D.R., 2013. Health risks from lead-based ammunition in the environment. *Environ. Health Perspect.* 121, a178–a179. <https://doi.org/10.1289/ehp.1306945>.
- Berglund, Å.M.M., Ingvarsson, P.K., Danielsson, H., Nyholm, N.E.I., 2010. Lead exposure and biological effects in pied flycatchers *Ficedula hypoleuca* before and after the closure of a lead mine in northern Sweden. *Environ. Pollut.* 158, 1368–1375. <https://doi.org/10.1016/j.envpol.2010.01.005>.
- Boesen, A.H., Thiel, A., Fuchs, B., Evans, A.L., Bertelsen, M.F., Rodushkin, I., Arnemo, J.M., 2019. Assessment of the LeadCare® plus for use on Scandinavian brown bears *Ursus arctos*. *Front. Vet. Sci.* 6 <https://doi.org/10.3389/fvets.2019.00285>.
- Bojarska, K., Selva, N., 2012. Spatial patterns in brown bear *Ursus arctos* diet: the role of geographical and environmental factors. *Mamm. Rev.* 42, 120–143. <https://doi.org/10.1111/j.1365-2907.2011.00192.x>.
- Brown, L., Rosabal, M., Sorais, M., Poirier, A., Widory, D., Verreault, J., 2019. Habitat use strategy influences the tissue signature of trace elements including rare earth elements in an urban-adapted omnivorous bird. *Environ. Res.* 168, 261–269. <https://doi.org/10.1016/j.envres.2018.10.004>.
- Chiari, Mario, Cortinovis, Cristina, Bertoletti, Marco, Alborali, Loris, Zanon, Mariagrazia, Ferretti, Enrica, Caloni, Francesca, 2015. Lead, Cadmium and Organochlorine Pesticide Residues in Hunted Red Deer and Wild Boar from Northern Italy. *Food Addit. Contam. A* 32 (11), 1867–1874. <https://doi.org/10.1080/19440049.2015.1087058>.
- Cory-Slechta, D.A., Weiss, B., Cox, C., 1983. Delayed behavioral toxicity of lead with increasing exposure concentration. *Toxicol. Appl. Pharmacol.* 71, 342–352. [https://doi.org/10.1016/0041-008X\(83\)90021-2](https://doi.org/10.1016/0041-008X(83)90021-2).
- Craighead, D., Bedrosian, B., 2008. Blood lead levels of common ravens with access to big-game offal. *J. Wildl. Manag.* 72, 240–245, 6.
- Dahle, B., Sørensen, O.J., Wedul, E.H., Swenson, J.E., Sandegren, F., 1998. The diet of brown bears *Ursus arctos* in central Scandinavia: effect of access to free-ranging domestic sheep *Ovis aries*. *Wildl. Biol.* 4, 147–158. <https://doi.org/10.2981/wlb.1998.017.12>.
- Danielsson, Helena, Karlsson, G.Pihl, 2015. *Metaller I Mossa 2015*. Naturvårdsverket, Stockholm.
- Ecke, F., Benskin, J.P., Berglund, Å.M.M., de Wit, C.A., Engström, E., Plassmann, M.M., Rodushkin, I., Sörlin, D., Hörnfeldt, B., 2020. Spatio-temporal variation of metals and organic contaminants in bank voles *Myodes glareolus*. *Sci. Total Environ.* 713, 136353. <https://doi.org/10.1016/j.scitotenv.2019.136353>.
- Ecke, F., Singh, N.J., Arnemo, J.M., Bignert, A., Helander, B., Berglund, Å.M.M., Borg, H., Bröjer, C., Holm, K., Lanzone, M., Miller, T., Nordström, Å., Räikkönen, J., Rodushkin, I., Ågren, E., Hörnfeldt, B., 2017. Sublethal lead exposure alters movement behavior in free-ranging golden eagles. *Environ. Sci. Technol.* 51, 5729–5736. <https://doi.org/10.1021/acs.est.6b06024>.
- EFSA, 2013. Scientific opinion on lead in food. *EFSA Journal* 1570. <https://doi.org/10.2903/j.efsa.2010.1570>.
- Ettinger, A.S., Roy, A., Amarasiriwardena, C.J., Smith, D., Lupoli, N., Mercado-García, A., Lamadrid-Figueroa, H., Tellez-Rojo, M.M., Hu, H., Hernandez-Avila, M., 2014. Maternal blood, plasma, and breast milk lead: lactational transfer and contribution to infant exposure. *Environ. Health Perspect.* 122, 87–92. <https://doi.org/10.1289/ehp.1307187>.
- Evans, A.L., Singh, N.J., Friebe, A., Arnemo, J.M., Laske, T.G., Frobert, O., Swenson, J.E., Blanc, S., 2016. Drivers of hibernation in the brown bear. *Front. Zool.* 13, 7. <https://doi.org/10.1186/s12983-016-0140-6>.
- Finkelstein, M.E., Doak, D.F., George, D., Burnett, J., Brandt, J., Church, M., Grantham, J., Smith, D.R., 2012. Lead poisoning and the deceptive recovery of the critically endangered California condor. *Proc. Natl. Acad. Sci. Unit. States Am.* 109, 11449–11454. <https://doi.org/10.1073/pnas.1203141109>.
- Friebe, A., Evans, A.L., Arnemo, J.M., Blanc, S., Brunberg, S., Fleissner, G., Swenson, J.E., Zedrosser, A., 2014. Factors affecting date of implantation, parturition, and den entry estimated from activity and body temperature in free-ranging brown bears. *PLoS One* 9, e101410. <https://doi.org/10.1371/journal.pone.0101410>.
- Friebe, A., Swenson, J.E., Sandegren, F., 2001. Denning chronology of female brown bears in Central Sweden. *Ursus* 12, 37–45.
- García, M.H. de M., Moreno, D.H., Rodríguez, F.S., Beceiro, A.L., Álvarez, L.E.F., López, M.P., 2011. Sex- and age-dependent accumulation of heavy metals (Cd, Pb and Zn) in liver, kidney and muscle of roe deer *Capreolus capreolus* from NW Spain. *Journal of Environment Science and Health Part A Environmental Science* 46, 109–116. <https://doi.org/10.1080/10934529.2011.532422>.
- Gomo, G., Mattisson, J., Hagen, B.R., Moa, P.F., Willebrand, T., 2017. Scavenging on a pulsed resource: quality matters for corvids but density for mammals. *BMC Ecol.* 17, 22. <https://doi.org/10.1186/s12898-017-0132-1>.
- Gulson, B.L., Jameson, C.W., Mahaffey, K.R., Mizon, K.J., Patison, N., Law, A.J., Korsch, M.J., Salter, M.A., 1998. Relationships of lead in breast milk to lead in blood, urine, and diet of the infant and mother. *Environ. Health Perspect.* 106, 667–674. <https://doi.org/10.1289/ehp.98106667>.
- Helander, B., Axelsson, J., Borg, H., Holm, K., Bignert, A., 2009. Ingestion of lead from ammunition and lead concentrations in white-tailed sea eagles *Haliaeetus albicilla* in Sweden. *Sci. Total Environ.* 407, 5555–5563. <https://doi.org/10.1016/j.scitotenv.2009.07.027>.
- Hryhorczuk, D.O., Rabinowitz, M.B., Hessel, S.M., Hoffman, D., Hogan, M.M., Mallin, K., Finch, H., Orris, P., Berman, E., 1985. Elimination kinetics of blood lead in workers with chronic lead intoxication. *Am. J. Ind. Med.* 8, 33–42. <https://doi.org/10.1002/ajim.4700080105>.
- Iavicoli, L., Carelli, G., Stanek, E.J., Castellino, N., Calabrese, E.J., 2003. Effects of low doses of dietary lead on red blood cell production in male and female mice. *Toxicol. Lett.* 137, 193–199. [https://doi.org/10.1016/S0378-4274\(02\)00404-6](https://doi.org/10.1016/S0378-4274(02)00404-6).
- Karolinska Institutet, 2020. Medelvärdstabell För Metaller. <https://ki.se/imm/tidsserier-och-data>. (Accessed 26 October 2020).
- Keller, C.A., Doherty, R.A., 1980. Lead and calcium distributions in blood, plasma, and milk of the lactating mouse. *J. Lab. Clin. Med.* 95, 81–89. <https://doi.org/10.5555/uri:pii:002221438090428X>.
- Kelly, A., Kelly, S., 2005. Are mute swans with elevated blood lead levels more likely to collide with overhead power lines? *Waterbirds* 28, 331–334. [https://doi.org/10.1675/1524-4695\(2005\)028\[0331:AMSWEB\]2.0.CO;2](https://doi.org/10.1675/1524-4695(2005)028[0331:AMSWEB]2.0.CO;2).
- Khalid, S., Shahid, M., Niazi, N.K., Murtaza, B., Bibi, I., Dumat, C., 2017. A comparison of technologies for remediation of heavy metal contaminated soils. *J. Geochem. Explor.* 182, 247–268. <https://doi.org/10.1016/j.gexplo.2016.11.021>.
- Lam, S.S., McPartland, M., Noori, B., Garbus, S.-E., Lierhagen, S., Lyngs, P., Dietz, R., Therkildsen, O.R., Christensen, T.K., Tjørnløv, R.S., Kanstrup, N., Fox, A.D., Sørensen, I.H., Arzel, C., Krøkje, Å., Sonne, C., 2020. Lead concentrations in blood from incubating common eiders (*Somateria mollissima*) in the Baltic Sea. *Environ. Int.* 137, 105582. <https://doi.org/10.1016/j.envint.2020.105582>.
- Länstyrelserna, 2019. Algdta [WWW Document]. URL. <http://www.algdta.se/sv/pages/default.aspx>, 8.19.2020.
- Lazarus, M., Orct, T., Blanuša, M., Vicković, I., šostarić, B., 2008. Toxic and essential metal concentrations in four tissues of red deer *Cervus elaphus* from Baranja, Croatia. *Food Addit. Contam. Part A* 25(3), 270–283. <https://doi.org/10.1080/02652030701364923>.
- Lazarus, M., Orct, T., Reljić, S., Sedak, M., Bilandžić, N., Jurasović, J., Huber, D., 2018a. Trace and macro elements in the femoral bone as indicators of long-term environmental exposure to toxic metals in European brown bear *Ursus arctos* from Croatia. *Environ. Sci. Pollut. Control Res.* 25, 21656–21670. <https://doi.org/10.1007/s11356-018-2296-4>.
- Lazarus, M., Orct, T., Sergiel, A., Vranković, L., Marijić, V.F., Rašić, D., Reljić, S., Aladrović, J., Zvijacz-Kozica, T., Zieba, F., Jurasović, J., Erk, M., Mašlak, R., Selva, N., Huber, D., 2020. Metal(loid) exposure assessment and biomarker responses in captive and free-ranging European brown bear *Ursus arctos*. *Environ. Res.* 183, 109166. <https://doi.org/10.1016/j.envres.2020.109166>.
- Lazarus, M., Sekovanić, A., Orct, T., Reljić, S., Jurasović, J., Huber, D., 2018b. Sexual maturity and life stage influences toxic metal accumulation in Croatian Brown bears. *Arch. Environ. Contam. Toxicol.* 74, 339–348. <https://doi.org/10.1007/s00244-017-0487-5>.
- Lind, Y., Bignert, A., Odsjö, T., 2006. Decreasing lead levels in Swedish biota revealed by 36 years (1969–2004) of environmental monitoring. *J. Environ. Monit.* 8, 824–834. <https://doi.org/10.1039/B517867C>.
- Ma, 2011. Lead in mammals. In: Beyer, W.N., Meador, J.P. (Eds.), *Environmental contaminants in biota: interpreting tissue concentrations*. CRC Press, pp. 281–296.
- Manchi, S., Swenson, J.E., 2005. Denning behaviour of Scandinavian brown bears *Ursus arctos*. *Wildl. Biol.* 11, 123–132, 10.
- Martin, J., Basille, M., Van Moorter, B., Kindberg, J., Allainé, D., Swenson, J.E., 2010. Coping with human disturbance: spatial and temporal tactics of the brown bear *Ursus arctos*. *Can. J. Zool.* 88, 875–883. <https://doi.org/10.1139/Z10-053>.
- Mattson, G., 1993. A laboratory manual for cementum age determination of alaska brown bear first premolar teeth. Alaska Department of Fish and Game and Matson's Laboratory, Milltown, Montana.
- Mazerolle, M.J., 2019. AICcmodavg: model selection and multimodel inference based on (Q)AIC(c), 2.2.-2. Cran-R. <https://cran.r-project.org/package=AICcmodavg>.
- Miranda, M., López-Alonso, M., García-Partida, P., Velasco, J., Benedito, J.L., 2006. Long-term follow-up of blood lead levels and haematological and biochemical parameters in heifers that survived an accidental lead poisoning episode. *J. Vet. Med. Ser. A* 53, 305–310. <https://doi.org/10.1111/j.1439-0442.2006.00855.x>.

- Sevillano Morales, J.S., Moreno Rojas, R., Pérez-Rodríguez, F., Arenas Casas, A., Amaro López, M.A., 2011. Risk assessment of the lead intake by consumption of red deer and wild boar meat in Southern Spain. *Food Add. Contam. Part A* 28:8, 1021–1033. <https://doi.org/10.1080/19440049.2011.583282>.
- Nadjafzadeh, M., Hofer, H., Krone, O., 2013. The link between feeding ecology and lead poisoning in white-tailed eagles. *J. Wildl. Manag.* 77, 48–57. <https://doi.org/10.1002/jwmg.440>.
- Nelson, R., Wahner, H., Jones, J., Ellefson, R., Zollman, P., 1973. Metabolism of bears before, during, and after winter sleep. *American Journal of Physiology-Legacy Content* 224, 491–496. <https://doi.org/10.1152/ajplegacy.1973.224.2.491>.
- Ordiz, A., Milleret, C., Uzal, A., Zimmermann, B., Wabakken, P., Wikenros, C., Sand, H., Swenson, J.E., Kindberg, J., 2020. Individual variation in predatory behavior, scavenging and seasonal prey availability as potential drivers of coexistence between wolves and bears. *Diversity* 12. <https://doi.org/10.3390/d12090356>.
- Pebesma, E.J., 2018. Simple features for R: standardized support for spatial vector data. *The R Journal* 10, 439–446. <https://doi.org/10.32614/RJ-2018-009>.
- R Core Team, 2019. *R: A Language and Environment for Statistical Computing*, 4.0.3. R Foundation for Statistical Computing, Vienna, Austria.
- Rabinowitz, M.B., Wetherill, G.W., Kopple, J.D., 1976. Kinetic analysis of lead metabolism in healthy humans, vol. 58, pp. 260–270. <https://doi.org/10.1172/jci108467>.
- Rauset, G.R., Kindberg, J., Swenson, J.E., 2012. Modeling female brown bear kill rates on moose calves using global positioning satellite data. *J. Wildl. Manag.* 76, 1597–1606. <https://doi.org/10.1002/jwmg.452>.
- Renberg, I., Bindler, R., Brännvall, M.-L., 2001. Using the historical atmospheric lead-deposition record as a chronological marker in sediment deposits in Europe. *Holocene* 11, 511–516. <https://doi.org/10.1191/095968301680223468>.
- Rodríguez-Estival, J., Álvarez-Lloret, P., Rodríguez-Navarro, A.B., Mateo, R., 2013. Chronic effects of lead (Pb) on bone properties in red deer and wild boar: relationship with vitamins A and D3. *Environ. Pollut.* 174, 142–149. <https://doi.org/10.1016/j.envpol.2012.11.019>.
- Rodushkin, I., Ödman, F., Holmström, H., 1999. Multi-element analysis of wild berries from northern Sweden by ICP techniques. *Sci. Total Environ.* 231, 53–65. [https://doi.org/10.1016/S0048-9697\(99\)00080-7](https://doi.org/10.1016/S0048-9697(99)00080-7).
- Rodushkin, I., Ödman, F., Olofsson, R., Axelsson, M.D., 2000. Determination of 60 elements in whole blood by sector field inductively coupled plasma mass spectrometry. *J. Anal. At. Spectrom.* 15, 937–944. <https://doi.org/10.1039/B003561K>.
- Rogers, T.A., Bedrosian, B., Graham, J., Foresman, K.R., 2012. Lead exposure in large carnivores in the greater Yellowstone ecosystem. *J. Wildl. Manag.* 76, 575–582. <https://doi.org/10.1002/jwmg.277>.
- Salminen, R., Batista, M., Bidovec, M., Demetriades, A., De Vivo, B., De Vos, W., Duris, M., Gilucis, A., Gregorauskiene, V., Halamić, J., others, 2005. *Geochemical Atlas of Europe, Part 1, Background Information, Methodology and Maps*. Scandinavian Brown Bear Research Project, 2020. URL: <http://bearproject.info/research-and-methodology/>. (Accessed 1 March 2020).
- Settle, D.M., Patterson, C.C., 1980. Lead in albacore: guide to lead pollution in Americans. *Science* 207, 1167–1176. <https://doi.org/10.1126/science.6986654>.
- Silbergeld, E.K., 1991. Lead in bone: Implications for toxicology during pregnancy and lactation, vol. 91, pp. 63–70. <https://doi.org/10.1289/ehp.919163>.
- Skerfving, S., Löfmark, L., Lundh, T., Mikoczy, Z., Strömberg, U., 2015. Late effects of low blood lead concentrations in children on school performance and cognitive functions. *Neurotoxicology* 49, 114–120. <https://doi.org/10.1016/j.neuro.2015.05.009>.
- Stenset, N.E., Lutnæs, P.N., Bjarnadóttir, V., Dahle, B., Fossum, K.H., Jigsved, P., Johansen, T., Neumann, W., Opseth, O., Rønning, O., Steyaert, S.M.J.G., Zedrosser, A., Brunberg, S., Swenson, J.E., 2016. Seasonal and annual variation in the diet of brown bears *Ursus arctos* in the boreal forest of southcentral Sweden. *Wildl. Biol.* 22, 107–116. <https://doi.org/10.2981/wlb.00194>.
- Stokke, S., Brainerd, S., Arnemo, J., 2017. Metal deposition of copper and lead bullets in moose harvested in fennoscandia. *Wildl. Soc. Bull.* <https://doi.org/10.1002/wsb.731>.
- Strömberg, U., Lundh, T., Skerfving, S., 2008. Yearly measurements of blood lead in Swedish children since 1978: the declining trend continues in the petrol-lead-free period 1995–2007. *Environ. Res.* 107, 332–335. <https://doi.org/10.1016/j.envres.2008.03.007>.
- Swenson, J.E., Adamić, M., Huber, D., Stokke, S., 2007a. Brown bear body mass and growth in northern and southern Europe. *Oecologia* 153, 37–47. <https://doi.org/10.1007/s00442-007-0715-1>.
- Swenson, J.E., Dahle, B., Busk, H., Opseth, O., Johansen, T., Söderberg, A., Wallin, K., Cederlund, G., 2007b. Predation on moose calves by European Brown bears. *J. Wildl. Manag.* 71, 1993–1997. <https://doi.org/10.2193/2006-308>.
- Swenson, J.E., Jansson, A., Riig, R., Sandegren, F., 1999. Bears and ants: myrmecophagy by brown bears in central Scandinavia. *Can. J. Zool.* 77, 551–561. <https://doi.org/10.1139/z99-004>.
- Tsubota, T., Takahashi, Y., Kanagawa, H., 1987. Changes in serum progesterone levels and growth of fetuses in hokkaido Brown bears. *Ursus* 7, 355–358. <https://doi.org/10.2307/3872643>.
- Van de Walle, J., Pigeon, G., Zedrosser, A., Swenson, J.E., Pelletier, F., 2018. Hunting regulation favors slow life histories in a large carnivore. *Nat. Commun.* 9, 1100. <https://doi.org/10.1038/s41467-018-03506-3>.
- Virgolini, M.B., Rossi-George, A., Lisek, R., Weston, D.D., Thiruchelvam, M., Cory-Slechta, D.A., 2008. CNS effects of developmental Pb exposure are enhanced by combined maternal and offspring stress. *Neurotoxicology* 29, 812–827. <https://doi.org/10.1016/j.neuro.2008.03.003>.
- von Storch, H., Costa-Cabral, M., Hagner, C., Feser, F., Pacyna, J., Pacyna, E., Kolb, S., 2003. Four decades of gasoline lead emissions and control policies in Europe: a retrospective assessment. *Sci. Total Environ.* 311, 151–176. [https://doi.org/10.1016/S0048-9697\(03\)00051-2](https://doi.org/10.1016/S0048-9697(03)00051-2).
- Welch, C.A., Keay, J., Kendall, K.C., Robbins, C.T., 1997. Constraints on frugivory by bears. *Ecology* 78, 1105–1119. [https://doi.org/10.1890/0012-9658\(1997\)078\[1105:Cofbb\]2.0.Co;2](https://doi.org/10.1890/0012-9658(1997)078[1105:Cofbb]2.0.Co;2).
- Wikenros, C., Sand, H., Ahlqvist, P., Liberg, O., 2013. Biomass flow and scavengers use of carcasses after Re-colonization of an apex predator. *PLoS One* 8, e77373. <https://doi.org/10.1371/journal.pone.0077373>.
- Zedrosser, A., Dahle, B., Swenson, J.E., 2006. Population density and food conditions determine adult female body size in Brown bears. *J. Mammal.* 87, 510–518. <https://doi.org/10.1644/05-MAMM-A-218R1.1>.
- Zuur, A., Ieno, E.N., Walker, N., Saveliev, A.A., Smith, G.M., 2009. *Mixed Effects Models and Extensions in Ecology with R*, first. ed. Springer, New York.